

Mounting Priority

1. Direct to Wall
2. Direct to Overhang
3. Fascia
4. Angled Fascia
5. Under Eave
6. Direct to Brick
7. Telescoping Wall
8. Soffit
9. Rail
10. Non-Pen
11. VERSATILE™
12. Patio
13. Pole
14. Direct to Roof

Mounting Tools

- Stud Finder
- Marking Tool
- Drill
- 7/32" Drill Bit
- Level
- 1/2" Nut Setter
- 1/2" Socket Wrench
- 7/16" Wrench

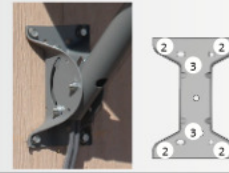
Notes

- Key steps highlighted in red
- All lags must be tightened snug plus a quarter turn

1. Direct to Wall

Supplies:

- Two 3" lag screws
- Four 2" lag screws
- Silicone



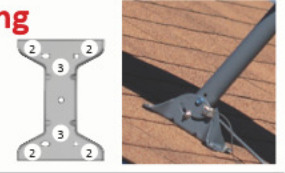
Installation Steps:

1. **Locate and mark the stud**
2. Level the footplate and mark center holes
3. Pre-drill center holes with 7/32" drill bit
4. Remove drill bit, attach 1/2" nut setter
5. Fill two holes with silicone
6. Apply silicone around the four corner holes on the bottom of the footplate
7. Drive 3" lags to center holes (99% in)
8. **Level the mast**
9. Tighten lags with 1/2" socket
10. Drive 2" lags to four corner holes (99% in)
11. Tighten corner lags with 1/2" socket
12. **Level mast and tighten hardware with 7/16" wrench**
13. Place dish on mast

2. Direct to Overhang

Supplies:

- Two 3" lag screws
- Four 2" lag screws
- Pitch Patch



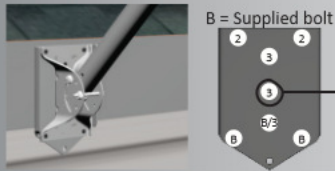
Installation Steps:

1. **Locate and mark the rafter over a nonliving space**
2. Level the footplate and mark the center holes
3. Pre-drill center holes with 7/32" drill bit
4. Remove drill bit, attach 1/2" nut setter
5. **Fill two holes with pitch patch**
6. **Apply pitch patch on the four corner holes on the bottom of the footplate**
7. Drive 3" lags through center holes (99% in)
8. **Level the mast**
9. Tighten lags with 1/2" socket
10. Drive 2" lags through four corner holes (99% in)
11. Tighten corner lags with 1/2" socket
12. **Level mast and tighten hardware with 7/16" wrench**
13. Place dish on mast

3. Fascia: On Hip

Supplies:

- Two/three 3" lag screws
- Two 2" lag screws
- Silicone



Assembly Steps:

1. Align footplate with fascia plate (pointed down)
2. Use supplied hardware to attach footplate*
3. Remove pivot bolt from footplate

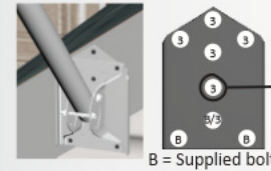
Installation Steps:

1. **Locate and mark the rafter**
2. Level footplate and mark the center hole
3. Pre-drill center hole with 7/32" drill bit
4. Remove drill bit, attach 1/2" nut setter
5. Fill hole with silicone
6. Apply silicone around upper corner holes on the bottom of fascia plate
7. Drive 3" lag through center hole (99% in)
8. Re-attach pivot bolt with 7/16" wrench
9. **Level the mast**
10. Drive 2" lags through upper corner holes (99% in)
11. Remove nut setter, attach 7/32" drill bit
12. Pre-drill remaining center holes
13. Remove drill bit, attach 1/2" nut setter
14. Fill holes with silicone
15. Drive 3" lag to center holes (99% in)
16. Tighten lags with 1/2" socket
17. **Level mast and tighten hardware with 7/16" wrench**
18. Place dish on mast

3. Fascia: On Gable

Supplies:

- Five/six 3" lag screws
- Silicone



Assembly Steps:

1. Align footplate with fascia plate (pointed up)
2. Use supplied hardware to attach footplate*
3. Remove pivot bolt from footplate

Installation Steps:

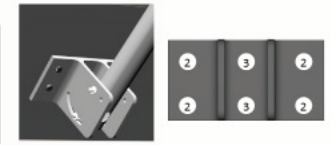
1. **Locate and mark the rafter**
2. Level footplate and mark the center hole
3. Pre-drill center hole with 7/32" drill bit
4. Remove drill bit, attach 1/2" nut setter
5. Fill hole with silicone
6. Drive 3" lag through center hole (99% in)
7. Remove nut setter, attach 7/32" drill bit
8. Re-attach pivot bolt with 7/16" wrench
9. **Level the mast**
10. Mark and pre-drill upper four holes
11. Remove drill bit, attach 1/2" nut setter
12. Fill holes with silicone
13. Drive 3" lags through upper four holes (99% in)
14. Tighten lags with 1/2" socket
15. **Level mast and tighten hardware with 7/16" wrench**
16. Place dish on mast

*Depending on the size of the fascia, a bolt or a 3" lag will go into hole "B/3"

4. Angled Fascia

Supplies:

- Two 3" lag screws
- Four 2" lag screws
- Silicone



Assembly Steps:

1. Disassemble mast from footplate
2. Attach mast to angled fascia
3. Tighten hardware

Installation Steps:

1. **Locate and mark the rafter**
2. Level the mount and mark top right corner hole
3. Apply silicone around four corner holes on the bottom of the mount
4. Drive 2" lag into top right hole (99% in)
5. **Level the mast**
7. Drive 2" lags into corner holes (99% in)
8. Tighten lags with 1/2" socket
9. Remove pivot bolt and let mast hang
10. Pre-drill center holes with 7/32" drill bit
11. Remove drill bit, attach 1/2" nut setter
12. Fill hole with silicone
13. Drive 3" lags through center holes (99% in)
14. Tighten lags with 1/2" socket
15. Re-attach pivot bolt with 7/16" wrench
16. **Level mast and tighten hardware with 7/16" wrench**
17. Place dish on mast

5: Under Eave

Supplies:

- Four 2" lag screws
- Silicone



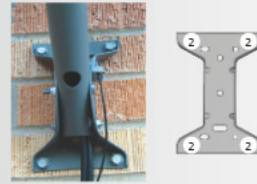
Installation Steps:

1. Find the exposed rafter
2. Mark the upper corner hole
3. Pre-drill the marked hole with 7/32" drill bit
4. Remove drill bit, attach 1/2" nut setter
5. Fill hole with silicone
6. Drive 2" lag (99% in)
7. Remove nut setter, attach 7/32" drill bit
8. **Level the mast**
9. Mark the remaining three holes
10. Pre-drill remaining three holes
11. Remove drill bit, attach 1/2" nut setter
12. Fill holes with silicone
13. Drive remaining 2" lags (99% in)
14. Tighten lags with 1/2" socket
15. Place dish on mast

6. Direct to Brick

Supplies:

- Four 2" lag screws
- Four lag shields
- 1/4" masonry bit
- 1/2" masonry bit
- Silicone



Installation Steps:

1. Level the mount on brick
 - Not in the mortar
 - Not on the edge of house
2. **Level the mast**
3. Mark the four corner holes
4. Verify the mast is level
5. **Drill pilot holes with 1/4" masonry bit**
6. Verify the mast is level again
7. Drill holes 2" deep with the 1/2" masonry bit
8. Insert lag shields
9. Insert silicone
10. Drive 2" lags through the four corner holes (99% in)
11. Tighten lags with 1/2" socket
12. **Level mast and tighten hardware with 7/16" wrench**
13. Place dish on mast

7. Telescoping Wall

Supplies:

- Four 2" lag screws
- Two 3" lag screws (wood)
- Silicone
- Allen wrench



Assembly Steps:

1. Align mounting insert with insert at top
2. Align footplate with mounting insert
3. Use supplied hardware to attach footplate
4. Tighten hardware

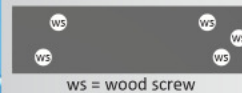
Installation Steps:

1. If on wood, follow steps for direct to wall
2. If on brick, follow steps for direct to brick
3. Slide mounting insert into base plate
4. **Level the mast**
5. Tighten set screws with 5/32" Allen wrench
6. **Level mast and tighten hardware with 7/16" wrench**
7. Place dish on mast

8. Soffit

Supplies:

- Silicone
- 6" Phillips head bit
- Allen wrench



ws = wood screw

Assembly Steps:

1. Align mounting insert with insert at top
2. Align footplate with mounting insert
3. Use supplied hardware to attach footplate
4. Tighten hardware

Installation Steps:

1. **Locate and mark the rafter**
2. Apply silicone around the five holes on the bottom of the soffit base
3. Drive a 3" wood screw into rear center hole
4. Drive a 3" wood screw into remaining holes
5. Slide mounting insert into soffit base
6. **Level the mast**
7. Tighten set screws with 5/32" Allen wrench
8. **Level mast and tighten hardware with 7/16" wrench**
9. Place dish on mast

14. Direct to Roof: LAST OPTION

Supplies:

- Two 3" lag screws
- Four 2" lag screws
- Pitch Patch



Installation Steps:

- * **Requires manager pre-approval**
 - * **Must use fall protection if on roof**
1. **Locate and mark the rafter**
 2. Level footplate and mark center holes
 3. Pre-drill center holes with 7/32" drill bit
 4. Remove drill bit, attach 1/2" nut setter
 5. **Fill holes with Pitch Patch**
 6. **Apply Pitch Patch around four corner holes on bottom of footplate**
 7. Drive 3" lags through center holes (99% in)
 8. **Level the mast**
 9. Tighten lags with 1/2" socket
 10. Drive 2" lags through four corner holes (99% in)
 11. Tighten corner lags with 1/2" socket
 12. **Level mast and tighten hardware with 7/16" wrench**
 13. Place dish on mast